



THE CEARÁ INVESTOR

Ceará

10.000 copies printed

Season 2013/2014

GUAJIRÚ INT'L AIRPORT OPENING!

The construction of Ceará's brandnew airport, Guajirú's North International Airport is moving forward with maximum speed: the landing strip has meanwhile become ready! The next job, the passenger terminal & customs facilities, is expected to finish

soon, well before the start of the FIFA World Cup Soccer & the Olympic Games. This airport will be an enormous boost to the region of Ilha do Guajirú, with a capacity of up to 1.200 flights per year. The airport will be the 2nd largest airport of Ceará, and

offer daily flights from all over Europe (Portugal, Italy, Holland, Spain) TAF, Transporte Area de Fortaleza, a Brazilian airline, already decided to include the airport in their operated network. Flight may commence any day! More information? See page 3!



OIL: BRAZIL'S MONEYMAKER

Brazil, who recently found the largest oil field of the past 30 years worldwide (!), is nonstop in the news everywhere. The country is facing a prosperous future, with enormous income guaranteed for many years yet to come. Overseas companies and institutions are queueing up and knocking on Brazil's door, no one is afraid to invest and finance projects in a nation that soon will become the nr. 3 exporter of oil of the world! Oil, what better moneymaker could a country enjoy?



CRISIS? BRAZIL KEEPS BOOMING!

While the world is struggling with a lot of financial trouble caused by over-exposed loans and credit, Brazil is not facing any trouble of such kind. Why? Because Brazilian banks traditionally never allowed any loans and credit! No loans also mean no bad loans and no credit also mean no credit crisis! This is the reason why the Brazilian bank system is not affected and the country able to move forward nonstop. Here your money and investments are safe and growing!



REAL ESTATE VALUES UP!

In Ceará/NE Brazil, real estate values are still much underpriced. Two important reasons behind it are: the area only recently started to develop and the improvements of Brazil's PAC (growth acceleration) program, totalling R\$ 529 billion!, are happening so fast that property values didn't yet catch up with it. Just travel around and check it out yourself! New roads, (metro/train) rails, ports and airports are realized with an impressive speed.

MY HOUSE MY LIFE PROGRAM

Brazil is doing very well and that's why its population also starts to enjoy the benefits from it. Brazil launched 'Minha Casa, Minha Vida', a house incentive program, through which reduced mortgage interest rates are enjoyed, making ownership more attractive than renting. The results are impressive: 9.1 million Brazilian families move into their own house within next year! More info? Google 'minha casa minha vida' and land at the government site.



**Minha Casa
Minha Vida**



FORTALEZA STADIUM READY

In 2014, the FIFA world cup soccer is held in Brazil. And Fortaleza is ready for it! The stadium Castelão is operative and the confederation/FIFA Cup taking place as planned. Brazil made it all happen, Brazil has met all deadlines, Brazil has shown the whole world it is capable of constructing enormous projects in no-time.

FUTURE CONCERTS & SHOWS AT ARENA CASTELÃO

Fortaleza's brandnew stadium called Arena Castelão is the city's next tourism booster. The stadium will continue her newborn life, right after the FIFA games. A special city committee charged with the organisation of concerts and events has meanwhile been installed and already booked success with attracting a worldclass performer: no one less than Paul McCartney realised the first big show.



The Windvillage - Ilha do Guajirú



EXCELLENT INVESTMENT! FOR SALE

Waterfront Bungalows, Garden & Spa!

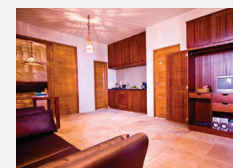
- beachfront (10 mtr)
- top location (center)
- 435 m² land
- infinity pool
- fully licenced (Semace)
- furnished & decorated
- online rental website
- WIFI + weather station
- high yearly returns
- airport now at 30 min.

Interested? Contact Beachlife!

Email info@beachlife-realestate.com

Tel. (NL) + 31 (0) 653 458 376

(BR) + 55 (0) 85 9906 2916



MORE INFO?



WWW.THEWINDVILLAGE.COM

LOW TAXES & DUTIES

If you consider to invest in Ceará & NE Brazil, a welcome ingredient is Brazil's low taxes & duties:

- the IPTU: Urban Property Tax = 1 % only
- the ITBI : Property Transfer Tax = 2 % only
- the CARTORIO/notary costs = 2 % only

As you see, Brazil is the perfect investment country!



SHARP TOURIST GROWTH!

In Ceará, the number of tourists is sharply rising. This trend started some years ago, and is yet continuing with even higher speed!

- 2011 - 2.5 mill
- 2012 - 2.9 mill
- 2013 - 3.2 mill
- 2014 - 3.5 mill

Logical also, while Ceará has a perfect year round climate.

OLYMPICS FOR BRAZIL!



EASY BUYING REAL ESTATE

For all investors in Brazil, there is some welcome and positive news: it is very easy to become owner of Brazilian real estate. There is no complication involved in it at all! You simply have to register yourself at the local tax service, take a so-called CPF (a registration card of a physical person) and when registered you can simply start off and buy! You may also contact Beachlife or visit the website www.beachlife-realestate.com (go to "how invest" and "steps to invest").

RECORD INVESTMENTS & NEW LUXURY STAYS AT GUAJIRU!



At Ilha do Guajirú, the Investor's Paradise, an amazing number of entrepreneurs invested in land and real estate. But several owners also initiated some high class constructions! Due to this, the area is

much in the lift, with rising land values with 2 digits (%) per annum. This tendency, attracting ofcourse automatically again more investors(!), has made the spot to become the best-of-all investments.



TAF FIRST AIRLINE CALLING ON GUAJIRU AIRPORT

TAF, Transporte Aéreo Fortaleza, is the first airline offering flights from various destinations to Guajirú North Int'l Airport. Others like TAP, Alitalia, Arke Fly & Air Madrid may soon follow!



Recently, Brazil launched its impressive PAC program or Growth Acceleration Program. The program involves Rs 503,9 or Euro 186 billion for improving infrastructure, roads, airports, ports and more.

BRAZIL LEADS B.R.I.C.

During the next 30 years to come, the world will be dominated by the B.R.I.C., Brazil, Russia, India, & China. Did you know that by 2041 the B.R.I.C. will outstrip the G6? Brazil is hot & booming!

The Beachlife Credit Facility available to all investors!

Simple conditions:

- min. 25% deposit
- max. 75% spread out
- only 6% effective interest
- free pay off at any time
- no rating or qualification required

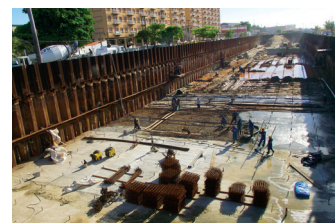
For info contact Beachlife!

WORKS AQUARIUM STARTED!



Fortaleza's amazing new project, the construction of one of the biggest aquaria worldwide, has started off at Praia do Iracema! The aquarium, incredible in size is involving a huge gov-

ernment support, up to Usd 108 million! This super prestigious will increase the tourist numbers further in Ceará and be an architectural icon of the city.



MORE PROPERTIES?

VISIT WWW.BEACHLIFE-REALESTATE.COM
>250 PROPERTIES IN WHOLE CEARÁ!

ILHA DO GUAJIRU
 € 30.000,- €30,-/m²



BUILDING PLOT, READY TO CONSTRUCT!

Building plot, on investor's paradise Ilha do Guajirú, with the highest returns on investment of Ceará, see Official Masterplan Ilha do Guajirú no. 310-318.

1000 m2
2nd ROW

Info? www.beachlife-realestate.com > properties > no. 16

ILHA DO GUAJIRU
 € 56.250,- €37,50/m²



HIGH LOCATED WITH VIEWS

Building plot, on investor's paradise Ilha do Guajirú, partially high located with splendid views, see Off. Masterplan Ilha do Guajirú no. 228 - 235.

1500 m2
3RD ROW

Info? www.beachlife-realestate.com > properties > no. 48

CUMBUCO
 € 224.950,- €265,-/m²



BUILDING PLOT, THE BEST OF CUMBUCO!

Cumbuco's 2 best beachfront plots, each 850 m², next to Hotel Sunset, with impressive views to the left and right (project also for sale, see no. 39)

850 m2
BEACHFRONT

Info? www.beachlife-realestate.com > properties > no. 10

ILHA DO GUAJIRU
 € 74.950,-



APARTMENT, FULLY FURNISHED!

Top beachfront apartment, perfect investment, with excellent online rental returns (20% p.a.), furniture not incl., see www.thewindvillage.com

440 m2
BEACHFRONT

Info? www.beachlife-realestate.com > properties > no. 24

TAIBA
 € 122.500,-



BUILDING PLOT, WITH FREE 1000 M²!

Building plot, at Taiba's lovely beach, not far from the picturesque center, next to the Norwegian project www.taiba.no, huge plot, excellent location.

3200 + 1000m2
BEACHFRONT

Info? www.beachlife-realestate.com > properties > no. 12

ILHA DO GUAJIRU
 price on request



LARGE BUILDING PLOT, PERFECT FOR PROJECT!

Large building plot, on investor's paradise Ilha do Guajirú, with the highest returns on investment of Ceará, see Official Masterplan Ilha do Guajirú no. 213-217.

2633 m2
BEACHFRONT

Info? www.beachlife-realestate.com > properties > no. 18

ILHA DO GUAJIRU
 € 43.500,- €150,-/m²



BUILDING PLOT, SUPER LOCATION!

Building plot, close to the center, perfect for a small house or holiday home at Praia da Barra, with the highest returns on investment of Ceará, see Official Masterplan Ilha do Guajirú no. 1301.

290 m2
BEACHFRONT

Info? www.beachlife-realestate.com > properties > no. 23

ILHA DO GUAJIRU
 price on request



ATTRACTIVE SIZE PLOT

Building plot, on investor's paradise Ilha do Guajirú, with 2 digit returns on investment per year, see Official Masterplan Ilha do Guajirú no. 320 + 321.

1200 m2
BEACHFRONT

Info? www.beachlife-realestate.com > properties > no. 31

ILHA DO GUAJIRU
 € 37.500,- €37,50/m²



BUILDING PLOT, ATTRACTIVE INVESTMENT!

Building plot, on investor's paradise Ilha do Guajirú, with the highest returns on investment of Ceará, see Official Masterplan Ilha do Guajirú no. 107 - 112.

1000 m2
3RD ROW

Info? www.beachlife-realestate.com > properties > no. 14

ILHA DO GUAJIRU
 € 16.380,- €30,-/m²



BUILDING PLOT, SHARP INVESTMENT!

Building plot, on investor's paradise Ilha do Guajirú, with the highest returns on investment of Ceará, see Official Masterplan Ilha do Guajirú no. 409.

546 m2
2ND ROW

Info? www.beachlife-realestate.com > properties > no. 26

ILHA DO GUAJIRU
 € 25.000,- €25,-/m²



BUILDING PLOT, RISING INVESTMENT!

Building plot, on investor's paradise Ilha do Guajirú, with the highest returns on investment of Ceará, see Official Masterplan Ilha do Guajirú no. 1000.

1000 m2
4th ROW

Info? www.beachlife-realestate.com > properties > no. 30

CUMBUCO
 € 62.500,-



ENTIRE PROJECT, FULLY LICENSED!

Complete project for sale, "Residência Buganvila", fully licensed, including all images/designs/ground plans/3D movie/sales brochure, for land see no. 10

SEE NO. 10
BEACHFRONT

Info? www.beachlife-realestate.com > properties > no. 50

CONTACT US?

OR 00 (31) 31 653 458 376

TEL 00 (31 = BRAZIL ACCESS) 55 85 9906 2916

INFO@BEACHLIFE-REALESTATE.COM

&

WWW.ILHA-DO-GUAJIRU.COM/REALESTATE.HTML

>150 PROPERTIES ON ILHA DO GUAJIRU!

ILHA DO GUAJIRU
inviting bid €75,- /m²



HUGE PLOT, LANDSPLIT POSSIBLE!

Enormous plot, huge in size, allowing you to do a landsplit project (selling in smaller parts). See Official Masterplan Ilha do Guajirú no. 202.

5925 m²
BEACHFRONT

Info? www.beachlife-realestate.com > properties > no. 19

ILHA DO GUAJIRU
€ 33.300,- €45,-/m²



BUILDING PLOT, CLOSE TO THE BEACH!

Building plot, on investor's paradise Ilha do Guajirú, sizes from 740 - 1250 mtr., see Official Masterplan Ilha do Guajirú no. 116 + 122 - 128.

740 m²
2ND ROW

Info? www.beachlife-realestate.com > properties > no. 15

FOR RENT **ILHA DO GUAJIRU**
€ 100/120,- PER NIGHT



FURNISHED APARTMENT, THE WIND VILLAGE, 50

Fully furnished apartment, up to 4 persons, super beachfront (10 mtr!) the most comfortable stay at Ilha do Guajirú. Bookings? www.thewindvillage.com!

440 m²
BEACHFRONT

Info? www.beachlife-realestate.com > properties > no. 29

CUMBUCO
€ 127.500,- €150,-/m²



BUILDING PLOT, FREE SEAVIEW!

Building plot, right behind the Windtown Hotel, excellent for a project, perfect location, super close to the beach (40 m!).

840 m²
2ND ROW

Info? www.beachlife-realestate.com > properties > no. 11

ILHA DO GUAJIRU
price on request



EXTRA WIDE BEACH IN FRONT!

Huge building plot, on investor's paradise Ilha do Guajirú, with 2 digit returns on investment per year, see Official Masterplan Ilha do Guajirú no. 326 + 327.

1867 m²
BEACHFRONT

Info? www.beachlife-realestate.com > properties > no. 21

ILHA DO GUAJIRU
€ 52.710,- from €105,- /m²



BUILDING PLOT, HIGH LOCATION & VIEWS!

Building plot, on investor's paradise Ilha do Guajirú, high location, magnificent views to the Secret Spot, see Official Masterplan Ilha do Guajirú no. 501 + 502.

502 m²
BEACHFRONT

Info? www.beachlife-realestate.com > properties > no. 40

ILHA DO GUAJIRU
€ 22.000,- €20,-/m²



BUILDING PLOT, TO REALISE YOUR DREAMS!

Building plot, on investor's paradise Ilha do Guajirú, upwind at Praia da Barra, with numerous coco palms, see Official Masterplan Ilha do Guajirú no. 707-727.

1100 m²
3^D ROW

Info? www.beachlife-realestate.com > properties > no. 5

FOR RENT **CUMBUCO**
€ 50,- PER NIGHT



PRIVATE APARTMENT, IN ECO PARADISE, 35 M²!

Apartment, entirely renovated, matching all luxury standards, directly from the owner, for medium or long term rental.

6400 m²
BEACHFRONT

Info? www.beachlife-realestate.com > properties > no. 27

ILHA DO GUAJIRU
price on request



BUILDING PLOT, LANDSPLIT POSSIBLE!

Enormous plot, huge in size, allowing you to do a landsplit project (selling in smaller parts). See Official Masterplan Ilha do Guajirú no. 218-219.

1839 m²
BEACHFRONT

Info? www.beachlife-realestate.com > properties > no. 17

ILHA DO GUAJIRU
€ 50.000,- €50,-/m²



BUILDING PLOT, RISING VALUE!

Building plot, on investor's paradise Ilha do Guajirú, with the highest returns on investment of Ceará, see Off. Masterplan Ilha do Guajirú no. 411-412-413.

1000 m²
BEACHFRONT

Info? www.beachlife-realestate.com > properties > no. 4

ILHA DO GUAJIRU
price on request



COCOPALMED LAND!

Building plot, on investor's paradise Ilha do Guajirú, with the highest returns on investment of Ceará, see Off. Masterplan Ilha do Guajirú no. 403-404-405.

1350 m²
BEACHFRONT

Info? www.beachlife-realestate.com > properties > no. 7

YOUR NEXT MOVE



GUAJIRÚ: ECO PARADISE • LAGOON+SEA • HIGH RETURNS FREE PROMOTION • QUALITY CONSTRUCTIONS • INT'L AIRPORT!



MAP ILHA DO GUAJIRÚ STAGE VI



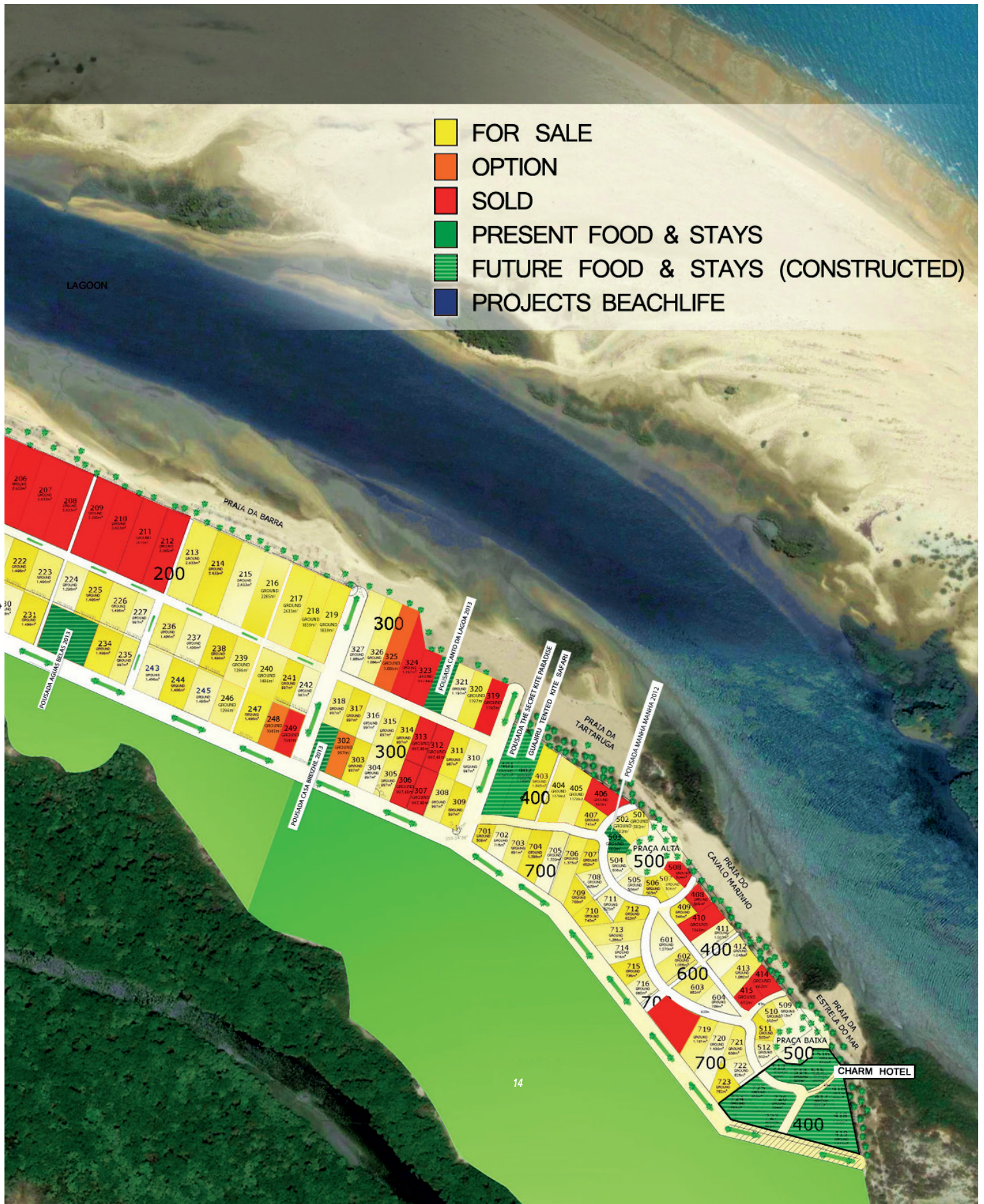
Beachfront € 50 - 150,- /m²				2nd line € 30 - 65,- /m²				3rd line € 20 - 45,- /m²							
Comparison: Cumbuco € 295,-/m² Jericoacoara € 390,-/m²															
PLOT	ROW	M2	STATUS	PLOT	ROW	M2	STATUS	PLOT	ROW	M2	STATUS	PLOT	ROW	M2	STATUS
101	3	1027,24	SOLD	217	1	2633,00	FOR SALE	315	2	997,48	FOR SALE	515	1	504,00	SOLD
102	3	992,99	FOR SALE	218	1	1839,00	FOR SALE	316	2	997,48	FOR SALE	516	1	514,00	SOLD
103	3	992,99	FOR SALE	219	1	1839,00	FOR SALE	317	2	997,48	FOR SALE				
104	3	992,99	FOR SALE	220	2	997,00	FOR SALE	318	2	997,48	FOR SALE	601	2	1270,00	FOR SALE
105	3	992,99	SOLD	221	2	1496,00	FOR SALE	319	1	1197,48	SOLD	602	2	1059,00	FOR SALE
106	3	1248,34	SOLD	222	2	1496,00	FOR SALE	320	1	1197,48	FOR SALE	603	2	983,00	FOR SALE
107	3	1248,34	FOR SALE	223	2	1496,00	FOR SALE	321	1	1197,48	FOR SALE	604	2	789,00	FOR SALE
108	3	738,13	FOR SALE	224	2	1296,00	FOR SALE	322	1	1197,48	SOLD				
109	3	738,13	FOR SALE	225	2	1496,00	FOR SALE	323	1	1197,48	SOLD	701	3	509,00	FOR SALE
110	3	1179,52	FOR SALE	226	2	1496,00	FOR SALE	324	1	1197,48	SOLD	702	3	718,00	FOR SALE
111	3	997,48	FOR SALE	227	2	997,00	FOR SALE	325	1	1867,42	OPTION	703	3	891,00	FOR SALE
112	3	997,48	FOR SALE	228	3	997,00	FOR SALE	326	1	1867,42	FOR SALE	704	3	1298,00	FOR SALE
113	3	997,48	SOLD	229	3	1496,00	FOR SALE	327	1	1867,42	FOR SALE	705	3	1320,00	FOR SALE
114	3	997,48	SOLD	230	3	1496,00	FOR SALE					706	3	1375,00	FOR SALE
115	2	997,48	SOLD	231	3	1496,00	FOR SALE	401	1	1951,00	SOLD	707	3	652,00	FOR SALE
116	2	997,48	FOR SALE	232	3	1296,00	SOLD	402	1	1765,00	OPTION	708	3	628,00	FOR SALE
117	2	997,48	SOLD	233	3	1496,00	SOLD	403	1	1595,00	FOR SALE	709	3	766,00	FOR SALE
118	2	997,48	SOLD	234	3	1496,00	FOR SALE	404	1	1370,00	FOR SALE	710	3	740,00	FOR SALE
119	2	1179,52	SOLD	235	3	997,00	FOR SALE	405	1	1172,00	FOR SALE	711	3	625,00	FOR SALE
120	2	738,13	SOLD	236	2	1496,00	FOR SALE	406	1	1029,00	OPTION	712	3	623,00	FOR SALE
121	2	738,13	SOLD	237	2	1496,00	FOR SALE	407	2	741,00	FOR SALE	713	3	1386,00	FOR SALE
122	2	1248,34	FOR SALE	238	2	1496,00	FOR SALE	408	1	509,00	SOLD	714	3	914,00	FOR SALE
123	2	1248,34	FOR SALE	239	2	1296,00	FOR SALE	409	2	546,00	FOR SALE	715	3	736,00	FOR SALE
124	2	992,99	FOR SALE	240	2	1496,00	FOR SALE	410	1	1069,00	SOLD	716	3	685,00	FOR SALE
125	2	992,99	FOR SALE	241	2	1045,00	FOR SALE	411	1	1011,00	FOR SALE	717	3	884,00	FOR SALE
126	2	992,99	FOR SALE	242	2	1045,00	FOR SALE	412	1	1046,00	FOR SALE	718	3	973,00	FOR SALE
127	2	992,99	FOR SALE	243	3	1496,00	FOR SALE	413	1	1082,00	FOR SALE	719	3	1191,00	FOR SALE
128	2	1027,24	FOR SALE	244	3	1496,00	FOR SALE	414	1	662,00	SOLD	720	3	1486,00	FOR SALE
				245	3	1496,00	FOR SALE	415	2	632,00	SOLD	721	3	658,00	FOR SALE
201	1	5925,00	SOLD	246	3	1296,00	FOR SALE	416	1	724,00	SOLD	722	3	628,00	FOR SALE
202	1	5925,00	INVITING BID	247	3	1496,00	FOR SALE	417	2	720,00	SOLD	723	3	762,00	FOR SALE
202a *	1	2633,00	FOR SALE	248	3	1045,00	OPTION	418	1	840,00	SOLD	724	3	783,00	SOLD
202b *	2	1296,00	FOR SALE	249	3	1045,00	SOLD	419	1	650,00	SOLD	725	3	656,00	SOLD
202c *	3	1296,00	FOR SALE									726	3	704,00	SOLD
203	1	5925,03	SOLD	301	3	997,48	SOLD	501	1	502,00	FOR SALE	727	3	962,00	SOLD
204	1	5925,03	SOLD	302	3	997,48	OPTION	502	1	502,00	FOR SALE				
205	1	2285,00	SOLD	303	3	997,48	FOR SALE	503	1	502,00	SOLD	800	3	25054,00	SOLD
206	1	2633,00	SOLD	304	3	997,48	FOR SALE	504	1	506,00	FOR SALE	900	3	29322,00	SOLD
207	1	2633,00	SOLD	305	3	997,48	FOR SALE	505	1	506,00	FOR SALE	1000	3	21680,00	SOLD
208	1	2633,00	SOLD	306	3	997,48	SOLD	506	1	503,00	FOR SALE	1100	3	24040,00	SOLD
209	1	2285,00	SOLD	307	3	997,48	SOLD	507	1	504,00	FOR SALE	1200	1	7606,00	SOLD
210	1	2633,00	SOLD	308	3	997,48	FOR SALE	508	1	504,00	SOLD				
211	1	2633,00	SOLD	309	3	997,48	FOR SALE	509	1	513,00	FOR SALE	1300	1	9558,00	SOLD
212	1	2285,00	SOLD	310	2	997,48	FOR SALE	510	1	502,00	FOR SALE	1301	1	290,00	FOR SALE
213	1	2633,00	FOR SALE	311	2	997,48	FOR SALE	511	2	502,00	FOR SALE				
214	1	2633,00	FOR SALE	312	2	997,48	SOLD	512	2	502,00	FOR SALE				
215	1	2633,00	FOR SALE	313	2	997,48	SOLD	513	2	509,00	SOLD	1400	2	7387,00	SOLD
216	1	2285,00	FOR SALE	314	2	997,48	FOR SALE	514	2	502,00	SOLD	1500	1	22635,00	SOLD

* = Land split possible!

Contact Beachlife for details of the Guajiru Credit Facility!

INTERACTIVE MASTERPLAN? BUILDING PLOT LIST?

VISIT
VISIT

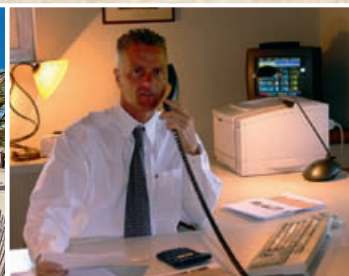


If you look to create your holiday home or simply invest in NE Brazil, then contact Beachlife!

- *Lands!*
- *Houses!*
- *Apartments!*
- *Investments!*
- *Credit & Finance!*
- *Reliable information!*

Beachlife!

Your professional Brazilian real estate specialist



Beachlife Imóveis do Brasil Ltda.

Tel BR 00 (31 = brazil access) 55 85 9906 2916

Tel NL 00 (31 = brazil access) 31 653 458 376

info@beachlife-realestate.com



motor behind

Ilha do Guajirú

the flatwatersea!

MORE INFO?



WWW.BEACHLIFE-REALESTATE.COM